



LIBERALFX

MetaTrader 4

User Guide



Open an Account ? ☰

Select account type
To start working an account is required:

To start working, you need a valid trade account. If you don't have it, you can create a demo or real account by selecting the corresponding option below and pressing 'Next':

Existing trade account

 Login:

 Password: Save password

 Server: LiberalFX-Demo

New demo account

New real account

Open an Account ? ☰

Personal details
To open an account, please fill out all the following fields:

Name:

E-Mail:

Phone:

Account type:

Deposit:

Leverage:

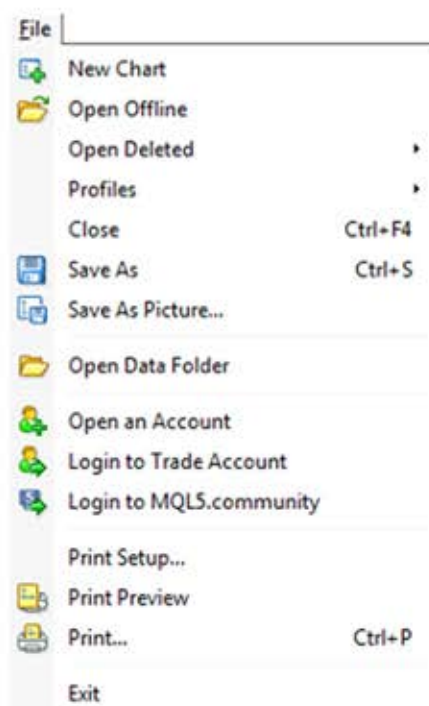
I agree to subscribe to your newsletters

Here is picture of what the MT4 main screen looks like



NOTE: If your demo account is inactive for 90 days, it is automatically deleted by the server.

The File tab

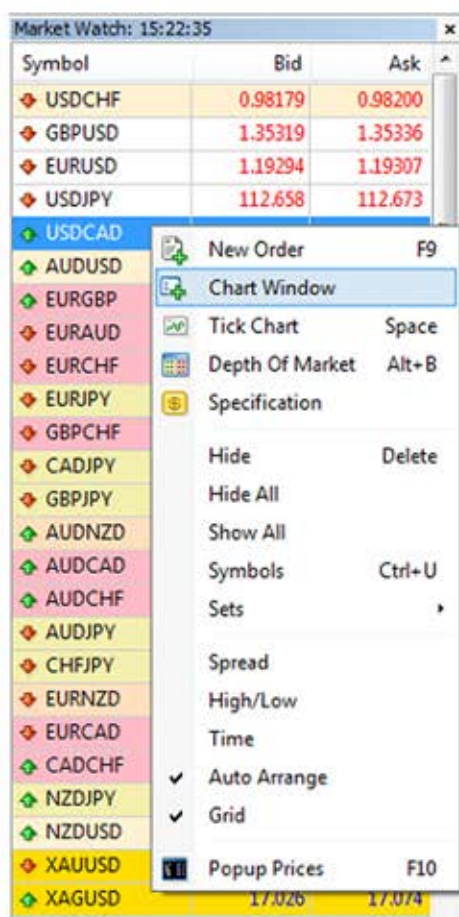


Customize your charts


You can access all charts from this tab. This can be done using the New Chart Tab directly. This is located just under the File tab.



Or you can click right the mouse button on the "Market Watch" window to produce the context menu:



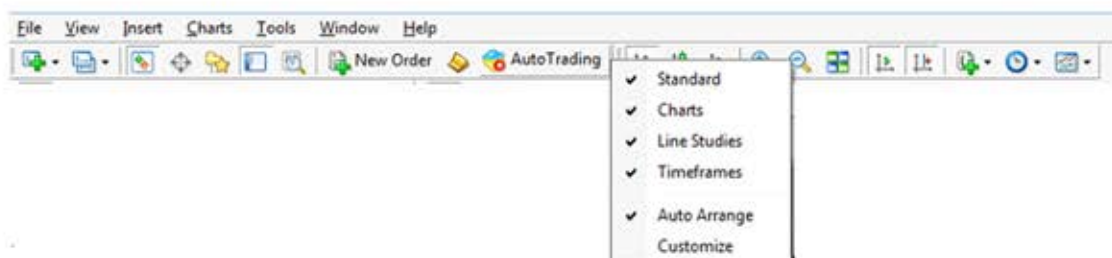
Market Watch Window

The "Market Watch" window can be activated by pressing the Ctrl+M key combination, or by using the View>Market Watch menu sequence or click the  button from the toolbar:




- New Order – enables the window to open/close a position or to place a new pending order;
- Chart Window – enables the chart of an instrument to be displayed;
- Tick Chart – shows the tick chart for the selected instrument;
- Hide – hides the specified symbol from the list in the “Market Watch” window;
- Hide All – hides all symbols from the list in the “Market Watch” window which are not used (if you have open positions or charts, the symbols will not be hidden);
- Show All – displays all available symbols in the “Market Watch” window;
- Symbols – enables the window where you can hide/show the selected instruments;
- Sets – saves/adjusts/deletes the custom settings for the “Market Watch” window;
- High/Low – shows/hides columns with the highest and lowest prices for each instrument;
- Time – displays a column with the arrival time of the latest quote for each instrument;
- Grid – hide /unhide gridlines in the “Market Watch” window;
- Popup Prices – opens the popup window which contains real time quotes for your selected instruments.


Toolbars are fully customizable. Simply Right click on the toolbar you wish customize and add or remove functions you are frequently using.




Graphics tool bar



Modify a graph as a line graph for click  button

Modify a graph as a bar graph for click  button

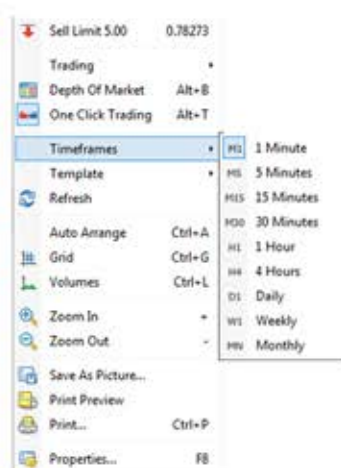
Modify a graph as a candlesticks graph for click  button

Time range tool bar

In MetaTrader 4 the following time periods can be used: 1, 5, 15, 30 minutes (M1, M5, M15, M30), 1 hour (H1), 4 hours (H4), 1 day (D1), 1 week (W1), 1 month (MN). To change a time period, use the "Periodicity" toolbar.



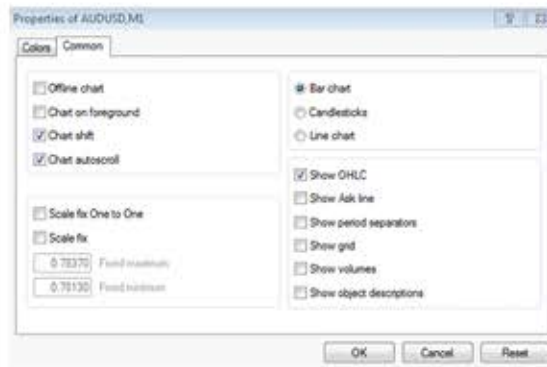
Or right click anywhere on the chart to produce the context menu to get access to the chart settings:



Properties- (or F8 button) enables the window where you can change chart settings, by selecting the color tab you can change the color of any element on the chart:

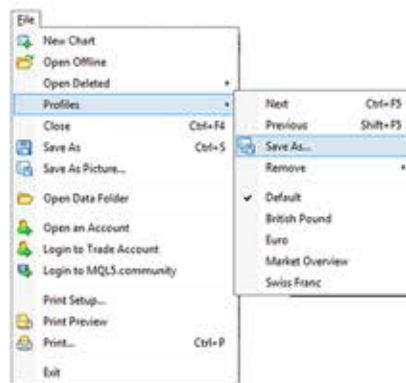


Or other settings can be changed in the Common tab:



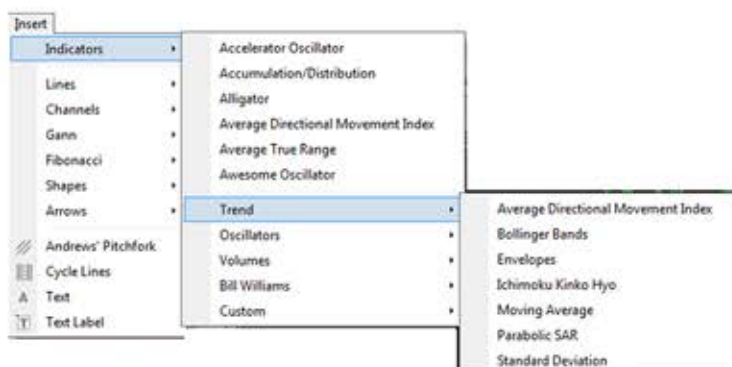
Profiles

Profiles are function where you can save your favourite chart or set of charts under a specific name with specific settings. Therefore if you have charts you are using frequently you will find this option very useful. You can rename profiles or delete them.



Indicator

You can select your favorite indicator in the indicators section. These tools are used in technical analysis and you would need to choose one that suits your trading style. When you select an indicator you can adjust the parameters according to your preferences. This option is not automatic you can change these setting under Option of a chart.

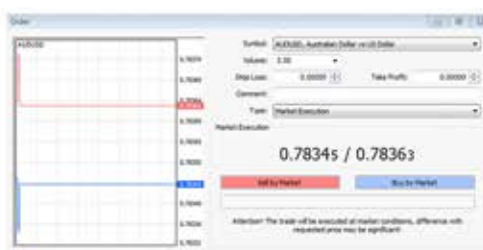


OPEN A POSITION

You can open or close your positions from the "order window".

- Right-Click on the "Market Watch" window or on the "Trade" tab of the "Terminal" window and select New Order from the context menu
- Or use the Tools>New Order menu sequence
- Or press the F9 button
- Or Right-Click on the chart window and select Trading>New Order from the context menu
- Or Double-Click on the currency pair in the "Market Watch" window.

The "Order" window



Before you enter the market you can change the details in the "Order" window:

- Symbol: a currency pair
- Volume: number of lots
- Stop Loss: the level of Stop Loss order
- Take Profit (TP) : the level of Take Profit order
- Comment: any notes show up in your report

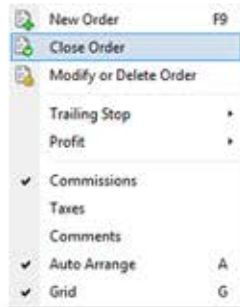


After you have pressed the Buy or Sell order buttons, you will receive confirmation that the process is successful.



To close the position:

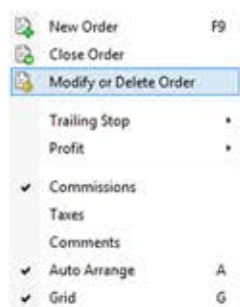
You can perform the operations listed in the "terminal" window by clicking on the "Close" button on the right-click menu.



Double click on the open position. The "Order#" window appears and you click the Yellow Close bar.



To delete or change the order you are forwarding to the system, right-click on the terminal window again and select "Modify or delete order".



Fill in the "Stop Loss" and "Take Profit" fields. Press the blue "Modify #..." button. In order to delete Stop Loss or Take Profit orders its level as equal to zero.

Buy Stop: an order to open a Buy position at a price higher than the price at the moment of placing the order

Sell Stop: an order to open a Sell position at a price lower than the price at the moment of placing the order

Buy Limit: an order to open a Buy position at a lower price than the price at the moment of placing the order

Sell Limit: an order to open a Sell position at a higher price than the price at the moment of placing the order

The following options may be changed in this window as well:

- Symbol: Currency pair;
- Volume: Transaction size in lots;
- Stop Loss: Stop Loss order level which will be activated once the pending order has been executed;
- Take Profit: Take Profit order level which will be activated once the pending order has been executed;
- Comment: Your comments for the pending order;
- Type: The type of pending order: Buy Stop, Buy Limit, Sell Stop, Sell Limit;
- At price: Pending order level;
- Expiry: If the box has not been checked the order is valid up to the time when you cancel it or when it is executed. If the box is checked the order is valid up to the moment specified in the box.

Once the Place order button is pressed it appears in the "Trade" tab of the "Terminal" window.

Account History



This tab shows the history of closed trades with the significant information relating to each trade.

Order	Time	Type	Size	Symbol	Price	S/L	T/P	Time	Price	Stop	Profit
44970	2018.01.29 13:05:15	sell	0.20	usdjpy	119.200	119.000	119.000	2018.01.29 13:05:16	119.000	0.00	-0.00
44976	2018.01.29 13:43:26	buy	0.20	usdjpy	119.200	119.000	119.000	2018.01.29 14:48:46	119.204	0.00	0.00
44980	2018.01.29 13:45:26	buy	0.20	usdjpy	122.770	122.770	122.770	2018.01.29 13:45:26	122.767	0.00	0.00
44982	2018.01.29 14:40:15	buy	0.20	usdjpy	122.880	122.880	122.880	2018.01.29 14:40:15	124.422	0.00	1.54
Profit/Draw: 1.54/0.00 Credit: 0.00 Exposure: 0.00 MarginLevel: 0.00											

Other Useful Keyboard Shortcuts

- Symbol: Currency pair;
- Volume: Transaction size in lots;
- Stop Loss: Stop Loss order level which will be activated once the pending order has been executed;
- Take Profit: Take Profit order level which will be activated once the pending order has been executed;
- Comment: Your comments for the pending order;
- Type: The type of pending order: Buy Stop, Buy Limit, Sell Stop, Sell Limit;
- At price: Pending order level;
- Expiry: If the box has not been checked the order is valid up to the time when you cancel it or when it is executed. If the box is checked the order is valid up to the moment specified in the box.

Once the Place order button is pressed it appears in the "Trade" tab of the "Terminal" window.

F1 : open the on line help "Userguide";

F2 : open the "History Center" window;

F3 : open the "Global Variables" window;

F4 : open MetaEditor;

F5 : switch to the next profile;

F6 : call the "Tester" dialog window for testing the expert attached to the chart window;

F7 : call the properties dialog window of the expert attached to their chart window, in order to change its settings;

F8 : call the chart setup dialog window, allowing basic chart parameters, colors, etc to be changed;

F9 : call the "New Order" window, allowing the entry of market, limit, stop orders; Left a

rrow : scroll chart to the left; Right arrow: scroll chart to the right; Up arrow : quickly scroll

chart to the left or (if the scale is defined), scroll chart upwards; Down arrow: quickly

scroll chart to the right or (if the scale is defined), scroll chart downwards;Numpad 5 :

restores chart vertical scale to its original default. If the scale was defined, this returns the

chart back to its visible range; Page Up : scroll a whole screen to the left; Page Down :

scroll a whole screen to the left; Home : move the chart to the start point (first bar);

End : move the chart to the end point (last, i.e. most current) bar;

"-" : zoom out (there are 6 levels of zoom available);

"+" : zoom in;

Delete : delete all selected objects;

Backspace : delete most recently added

objects, on a last-added-first-removed basis;

Enter : open/close the fast navigation window;

Esc : close any dialog window;